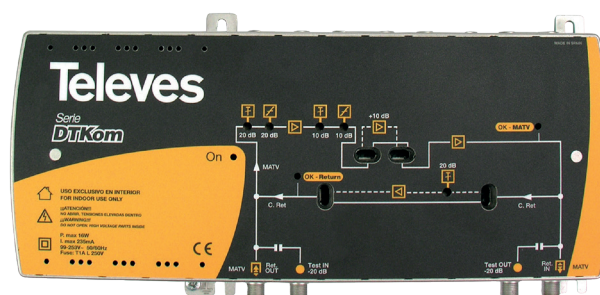


LAUNCH AND DISTRIBUTION AMPLIFIER

ACTIVE OR PASSIVE RETURN PATH

REF.	DESCRIPTION	EAN 13
451203	DTKOM AMP. 11/10 "F" RET(5..65)/MATV(1G) Vo129	8424450177587



+ DTKom serie launch and distribution amplifier is designed to CATV operators and is suitable with DOCSIS settings thanks to his expanded band width. It has a switching-mode return patch (active or passive) so this can be used in CoaxData networks.

- Configurable gain 30 / 40dB
- Direct Channel until 1GHz
- Passive or active return path 5 - 65MHz
- Equipped with equalizer, interstage equalizer and gain adjustment control.
- Designed with Power Doubling Technology (129 dBμV DIN45004B)

i

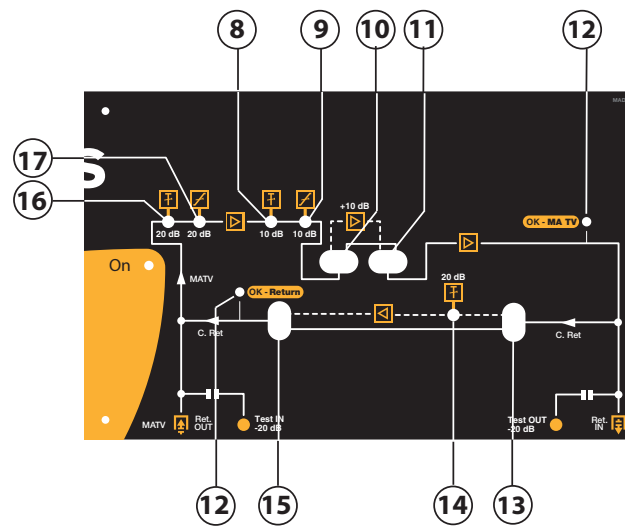
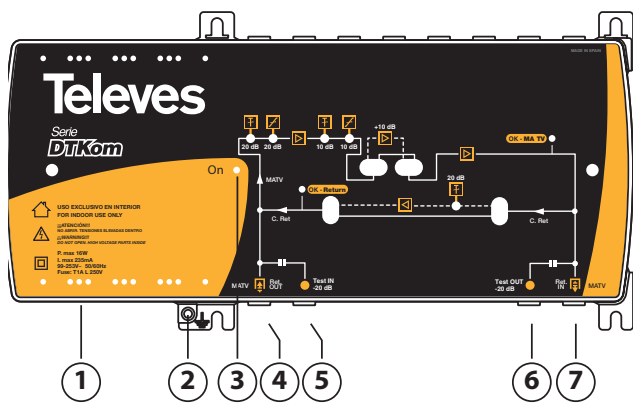
REF.	mm	g	Units / Packing
451203	280 x 142 x 48	2.450	1 /box

📄

Reference		451203	
Band	MHz	87 - 1006	5 - 65
Gain	dB	30 / 40	28 /-3
Flatness	dB	±1	±1
Maximum Output level	dBμV	129 DIN45004B 119 EN50083 (IMD2) 126 EN50083(IMD3)	118 DIN45004B 94 EN50083 (IMD2) 115 EN50083(IMD3)
Noise figure	dB	8	6
Interstage equalizer	dB	0 - 10	-
Equalizer	dB	0 - 10	0 - 20
Attenuator	dB	0 - 20	-
Main voltage	VAC	99 - 253	
AC Power Consumption	W	16	
Protection Index	IP	20	
Dimensions (W x H x D)	mm	280 x 142 x 48	
Weight	g	2450	



Block diagram and settings:



- | | |
|------------------------------|--------------------------------------|
| 1.- Mains supply input | 9.- MATV Signal interstage equalizer |
| 2.- Ground connection | 10/11.- MATV Additional gain switch |
| 3.- Led ON/OFF | 12.- Status LEDs |
| 4.- MATV Input / RETC Output | 13/15.- RETC Switch |
| 5.- MATV Input test | 14.- RETC Attenuator |
| 6.- MATV Output test | 16.- MATV Attenuator |
| 7.- MATV Output / RETC Input | 17.- MATV Equalizer |
| 8.- MATV Attenuator | |

