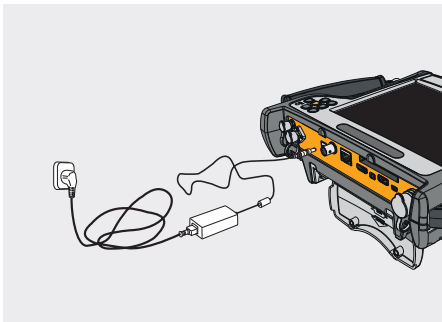




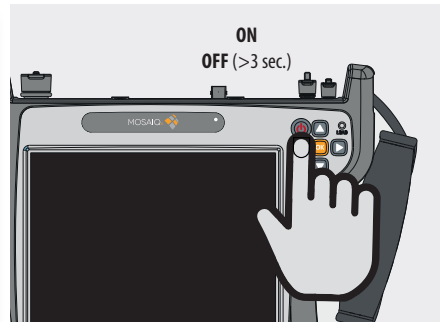
Multi-touch Meter/Analyser

Quick Guide

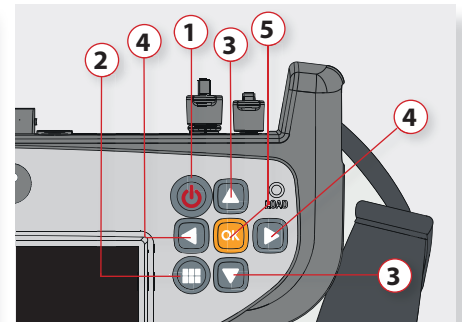
1.- Battery charge



2.- ON/OFF



4.- Keyboard



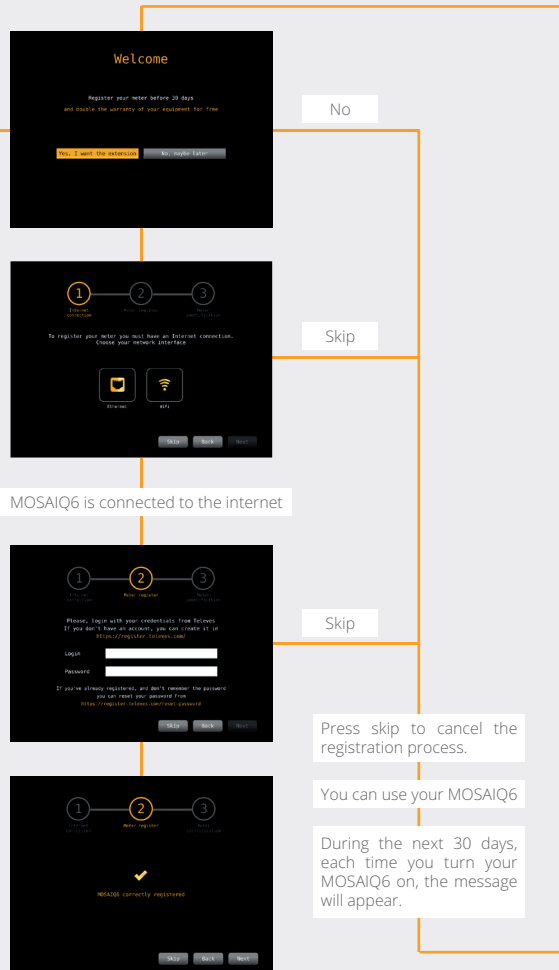
3.- Registration process

First of all, please, register yourself on our website (<https://register.televés.com/>). You will need your user name and password to register your MOSAIQ6. Follow the steps shown in the screen. Further details in the user manual.



The first time you turn your MOSAIQ6 on, you will see a message asking you to register your MOSAIQ6 in our web within 30 days.

You must have connection to the internet. Select Ethernet or Wi-Fi.



Enter the user name and password you use on our website.

Press skip to cancel the registration process.

You can use your MOSAIQ6

During the next 30 days, each time you turn your MOSAIQ6 on, the message will appear.

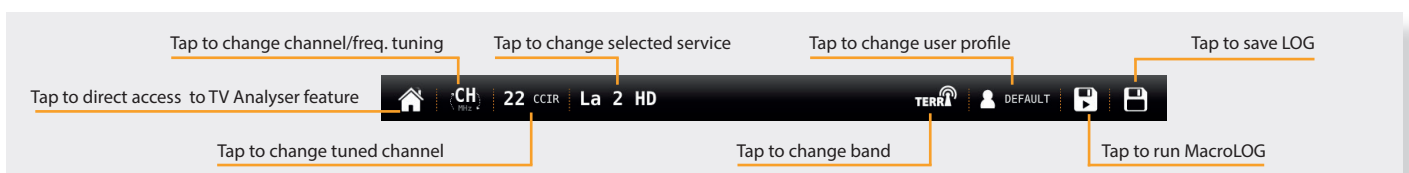
Registration completed successfully. You get the warranty extension for free

- 1. Device ON/OFF button:** To turn the equipment off, press and hold for more than 3 seconds. If the MOSAIQ6 is ON, press ON/OFF button to enable/disable the touch-screen
- 2. Menu button:** First press: features menu is shown. Second press: context menu is shown. Third press: all menus are hidden
- 3. Up/Down buttons:** Changes channel
- 4. Left/Right buttons:** Changes screen in multi screen features
- 5. OK button:** Selects an option

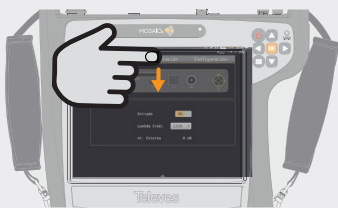
5.- Gestures

- Tap:** one fast touch with one finger
Select menu/option/check.
- Double tap:** two fast consecutive touches with one finger
Widget <=> Full screen.
- Swipe:** short swipe with one finger
Shows menus (see section 8.- Menus)
Spectrum => changes channel.
- Drag:** drag with one finger
Main menu wheel => feature search.
TV and Radio Analyser => switches between screens.
Spectrum/Echoes/Measurements => moves markers.
- Pinch/Spread:** pinch/spread two fingers on the screen
Spectrum => changes span.
Constellation => zoom in/out.
- Drag and drop**
Spectrum => changes tuned channel, dropping it to the centre of the spectrum.

6.- Bottom bar



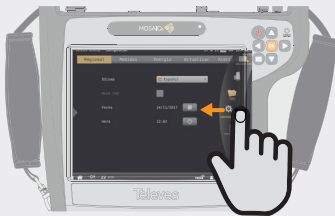
7.- Menus



Top menu (swipe on the top-central part of the screen)

Access to:

- Inputs/outputs
- Powering
- Settings (brightness, volume, headphones, GPS, network, Wi-Fi)



Main menu (swipe on the right-central side of the screen)

Access to:

- Settings
- User profiles
- Features
- LOGs



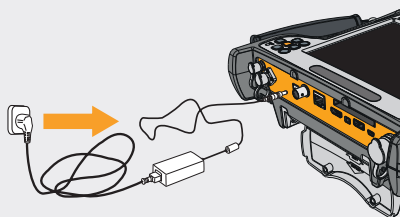
Top menu (swipe on the left-central part of the screen)

Access to:

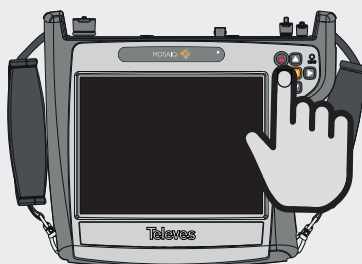
- Specific options of each feature

8.- Battery pack replacement

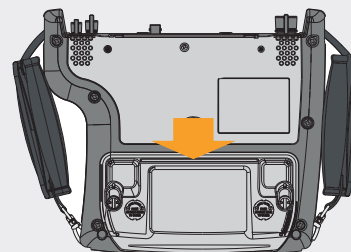
8.1.- Disconnect the meter from the power supply:



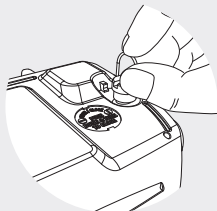
8.2.- Turn the meter off:



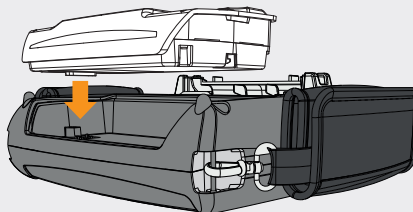
8.3.- The battery pack is placed in the bottom-back side:



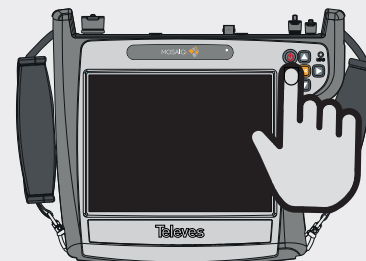
8.4.- Lift the fixings washers and rotate them 90°. You'll notice that the fixings get out automatically allowing to remove the battery pack:



8.5.- Put the new battery pack and rotate the fixings washers again until the fixings fit into the device:

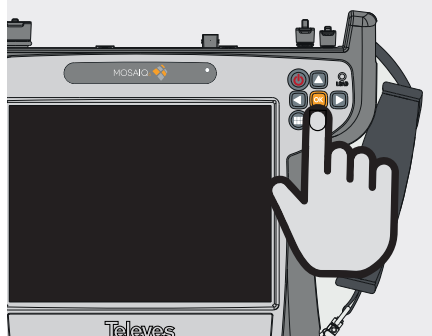


8.6.- Turn your MOSAIQ6 on:

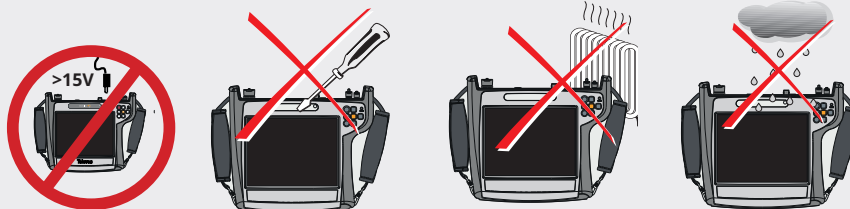


9.- Reset

Press OK button >10 seconds



10.- Safety

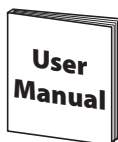


Li-ION
battery



Subjects may change without notice

www.televes.com



Reference	
596101	MOSAIQ6
596111	MOSAIQ6 selective O.F.



01031064-001